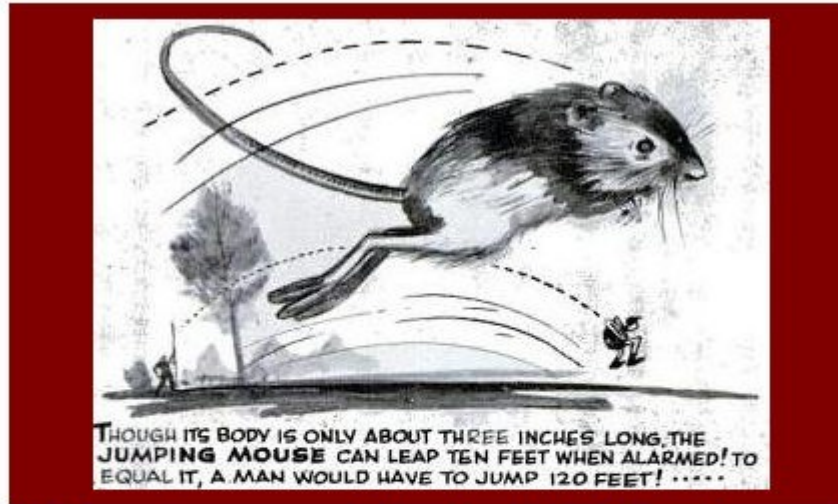


HOMESCHOOLFREEBIEOFTHEDAY.COM PRESENTS



# Natural Oddities

A FASCINATING COLLECTION TRUE CARTOONS ABOUT NATURE

VOLUME THREE

by Gus Mager

This ebook was brought to you courtesy of  
[HomeschoolFreebieOfTheDay.com](http://HomeschoolFreebieOfTheDay.com)

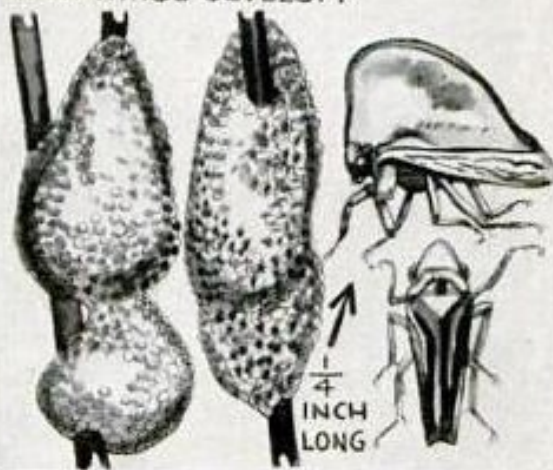
Join us every weekday for a great new free resource!

*New Graphics copyright 2010 HomeschoolFreebieOfTheDay.com, all rights reserved*



FROGS MAY LOOK ALIKE TO YOU, BUT THEY DON'T TO OTHER FROGS. **SOUTHERN LEOPARD FROGS** ARE SO SNOOTY THAT THEY REFUSE TO MATE WITH ORDINARY LEOPARD FROGS EVEN THOUGH THEY LIVE IN THE SAME POOL!

THOSE BUNDLES OF BUBBLES THAT CLING TO WEED STEMS ARE NOT CUCKOO SPIT, AS THEY ARE OFTEN CALLED. THEY ARE MADE BY **FROGHOPPERS**, OR SPITTLE INSECTS, AS NESTS IN WHICH TO LIVE UNTIL THEIR WINGS DEVELOP!

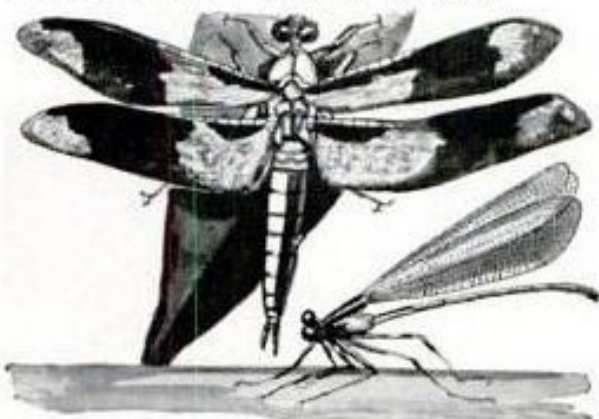


**NIGHTHAWKS** ARE NOT HAWKS AT ALL, BUT **GOATSUCKERS**. TO MAKE IT MORE COMPLICATED, THEY DO NOT MILK GOATS, THOUGH LEGEND SAYS THEY DO! THEY OFTEN FLY NEAR THESE ANIMALS IN SEARCH OF INSECTS ON WHICH THEY FEED



**MILK SNAKES** ARE THE SUBJECT OF ANOTHER FALLACIOUS LEGEND ABOUT MILK. THEY FREQUENT STABLES AND DAIRIES IN SEARCH OF MICE AND RATS, BUT DO NOT DRINK MILK. THEY DON'T EVEN DRINK MUCH WATER!

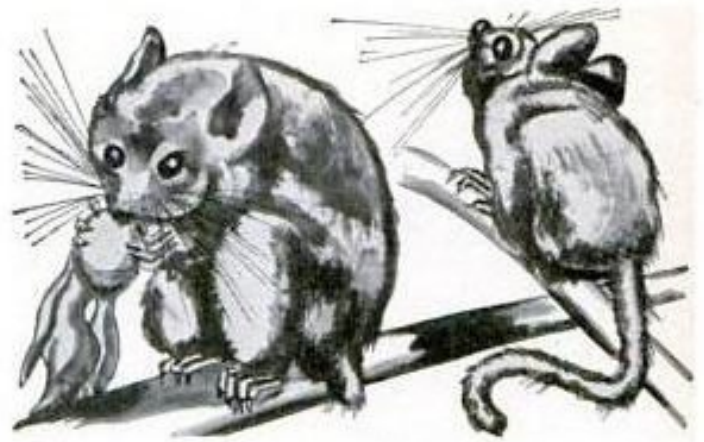
**MOST** DRAGON FLIES REST WITH THEIR WINGS SPREAD OUT FLAT. BUT **DAMSEL FLIES**, ONE OF THE SAME SPECIES, FOLD THEIR WINGS OVER THEIR BACKS, JUST TO BE DIFFERENT!



IF YOU THINK FISH AREN'T TOUGH, TACKLE A **GAR FISH** SOMETIME. BIG ONES, SOMETIMES WEIGHING SEVERAL HUNDRED POUNDS, HAVE SCALES SO HARD THAT THEY CAN'T BE PIERCED WITH AN AXE!



**THE PRAIRIE HORNED LARK** LAYS A TERRACE OF FLAT STONES OR CHIPS IN FRONT OF ITS NEST, APPARENTLY TO KEEP THE GRASS FROM GROWING UP TOO CLOSELY AROUND IT!



**THE LITTLE DORMOUSE**, A COMMON ANIMAL IN EUROPE, IS THE ONLY MAMMAL THAT CAN SHED ITS TAIL IN ESCAPING FROM AN ENEMY, AND GROW ANOTHER, LIKE A LIZARD!

**BUTTERFLIES** LIVE ON THEIR PAST! IN THE ADULT STAGE THEY TAKE LITTLE OR NO FOOD, USING ENERGY STORED UP IN THE CATERPILLAR PHASE, SO THEY CAN GIVE ALL THEIR ATTENTION TO MATING AND LAYING EGGS!

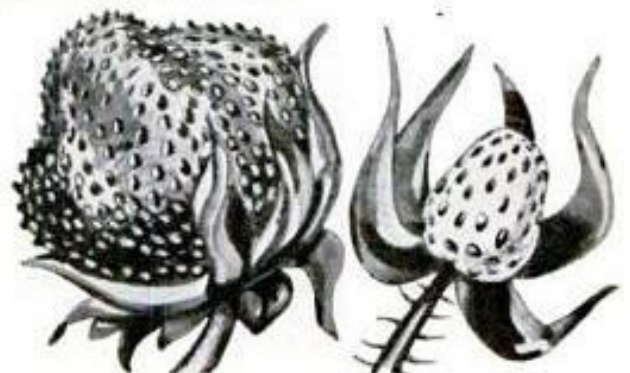


WHO SAYS WATER CAN'T RUN UPHILL? BOTANISTS TELL US THAT A GOOD-SIZED TREE LIFTS THE EQUIVALENT OF 500 BUCKETS OF WATER AND SAP OUT OF THE GROUND IN A TEN-HOUR DAY!



LIKE CERTAIN CHAMELEONS, THE LITTLE **SEA HORSE** HAS EYES THAT LOOK INDEPENDENTLY IN DIFFERENT DIRECTIONS!

WHY DOES THE **STRAWBERRY** SPORT ITS SEEDS BEDDED RIGHT IN ITS DELICIOUS SCARLET CAP, WHILE THE **RASPBERRY'S** CAP MUST BE LIFTED OFF ITS STEM TO UNCOVER THE SEEDS?





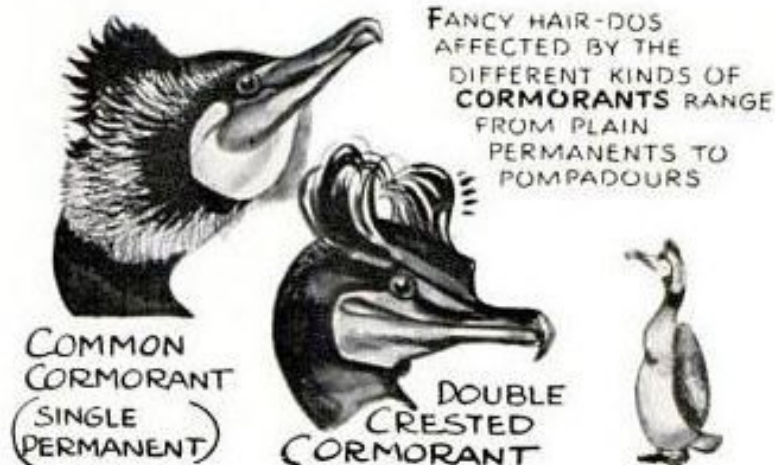


A HERON SITS HUMPED UP, LIKE AN OLD LADY OVER HER TEA, AND WITH ITS NECK FOLDED! **CRANES** NEVER SIT HUMPED UP, OR FOLD THEIR NECKS! WHO SAYS "SO WHAT?"?

**MOST PLANT GALLS** ARE CAUSED BY INSECTS WHICH STING TWIGGS OR LEAVES WHILE LAYING THEIR EGGS ON THEM. THE PLANT TISSUE SWELLS FROM THE IRRITATION, FORMING A HOLLOW SHELL THAT HOUSES THE YOUNG GRUB!



WHEN THE **LUMP SUCKER** TIRES OF SWIMMING, IT USES ITS VENTRAL FINS TO MOOR ITSELF TO A ROCK OR LEDGE, WITH A SUCTION SO POWERFUL THAT IT CAN HARDLY BE DISLODGED!



COMMON CORMORANT (SINGLE PERMANENT)

DOUBLE CRESTED CORMORANT

FANCY HAIR-DOS AFFECTED BY THE DIFFERENT KINDS OF **CORMORANTS** RANGE FROM PLAIN PERMANENTS TO POMPADOURS



MANY PEOPLE BELIEVE THAT THE **FLAMINGO** STANDS AND STRADDLES ITS NEST TO KEEP FROM CRUSHING THE EGGS! HOWEVER, THESE CURIOUS BIRDS DO SIT ON THEIR NESTS, WITH THEIR LEGS DOUBLED UNDER THEM!



OUR UGLY RIVER SALAMANDER, THE **HELLBENDER**, IS AS TOUGH AS HE LOOKS! SPECIMENS HAVE REMAINED ALIVE OUT OF WATER FOR 24 HOURS, OTHERS HAVE EMERGED FROM A SOAKING IN ALCOHOL, NOT ONLY ALIVE BUT WITH A PERFECT JAG ON!



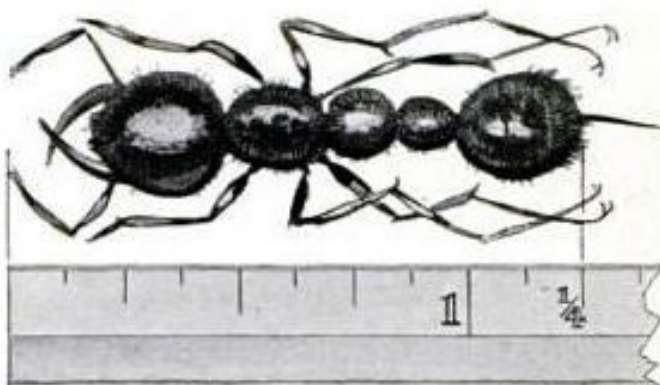
A DENIZEN OF BRAZIL, THE **GOELDI FROG**, CARRIES HER EGGS IN A KNAPSACK! A FOLD OF SKIN OVERGROWS THE EGGS UNTIL THEY'RE DEVELOPED, WHEN IT SPLITS AND THE BROOD FALLS OUT!



IN ADDITION TO HIS FAMILY, THIS BRAZILIAN **TOUCAN** HAS TO SUPPORT A TREMENDOUS SCHNOZZLE! FORTUNATELY IT CONSISTS MAINLY OF AIR CELLS, SO IT IS NOT SO HEAVY AS IT LOOKS!

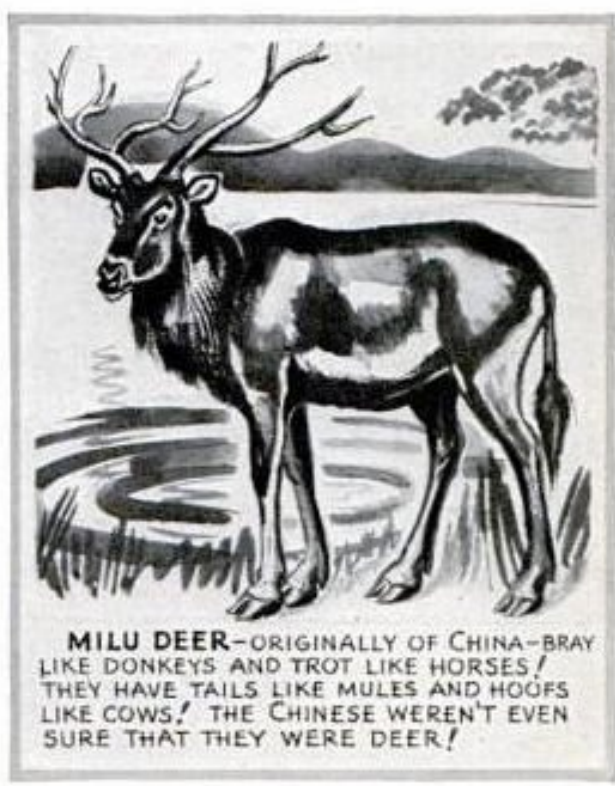


THE **FLAT-HEADED CATFISH** LAYS ITS EGGS ON THE RIVER BED AND THEN RUBS THEM INTO CUPLIKE CELLS ON ITS BELLY, WHERE THEY ARE NOURISHED BY ITS BLOOD UNTIL THEY HATCH!



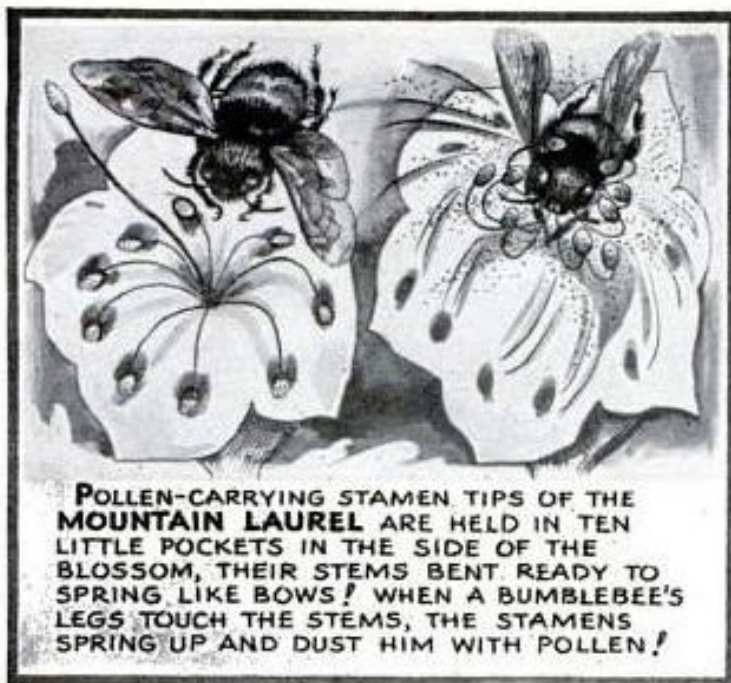
WORKERS OF A GIANT SOUTH AMERICAN SPECIES OF ANT ARE AN INCH AND A QUARTER LONG! MOST PRIMITIVE OF ANTS, THEY STILL CARRY A STING, WHICH HIGHER FORMS HAVE LOST!

THE TWO-FOOT TAIL OF THE BLACK **COATA MONKEY** IS SUCH A BIG HELP IN GETTING ALONG IN THE WORLD, THAT HE HAS NO USE FOR HIS THUMBS AND THEY HAVE DISAPPEARED!



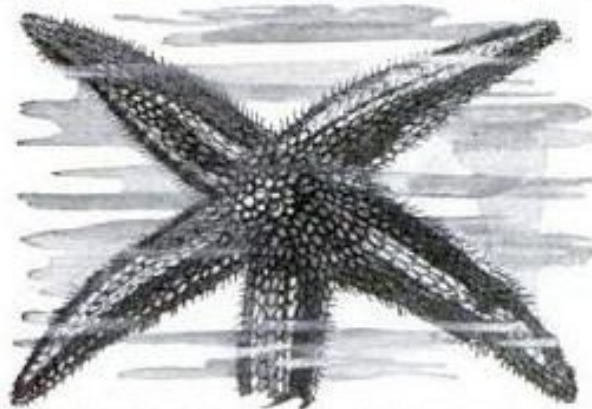
**MILU DEER**—ORIGINALLY OF CHINA—BRAY LIKE DONKEYS AND TROT LIKE HORSES! THEY HAVE TAILS LIKE MULES AND HOOFES LIKE COWS! THE CHINESE WEREN'T EVEN SURE THAT THEY WERE DEER!





**POLLEN-CARRYING STAMEN TIPS OF THE MOUNTAIN LAUREL** ARE HELD IN TEN LITTLE POCKETS IN THE SIDE OF THE BLOSSOM, THEIR STEMS BENT READY TO SPRING LIKE BOWS! WHEN A BUMBLEBEE'S LEGS TOUCH THE STEMS, THE STAMENS SPRING UP AND DUST HIM WITH POLLEN!

NATURALISTS SAY THAT **BULLFROGS** USUALLY REPEAT THEIR DEEP BASS SONG, "BETTER GO ROUND, BETTER GO ROUND," SEVEN TIMES BEFORE PAUSING! ONLY RARELY WILL ONE MAKE IT SIX OR EIGHT TIMES!

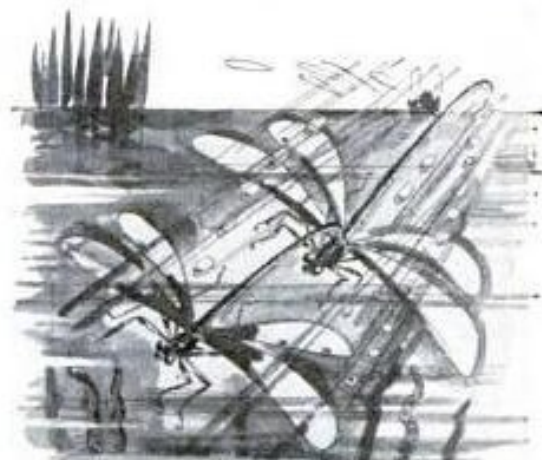


IF ONE OF THE FIVE ARMS OF THE COMMON **STARFISH** IS BROKEN OFF, ANOTHER GROWS IN ITS PLACE! STRANGER STILL, IF YOU CUT THE STARFISH IN HALVES, A COMPLETE STARFISH WILL DEVELOP FROM EACH HALF!

**WALKING FERNS** CAN TAKE STEPS TO MAKE PROGRESS! LEAVES REACH OUT IN TAPERED PROBES WHOSE SLENDER TIPS TAKE ROOT TO FORM NEW PLANTS! IN THE SECOND SEASON THE LEAF CHORD DIES, SEPARATING THE NEW PLANT FROM ITS PARENT!

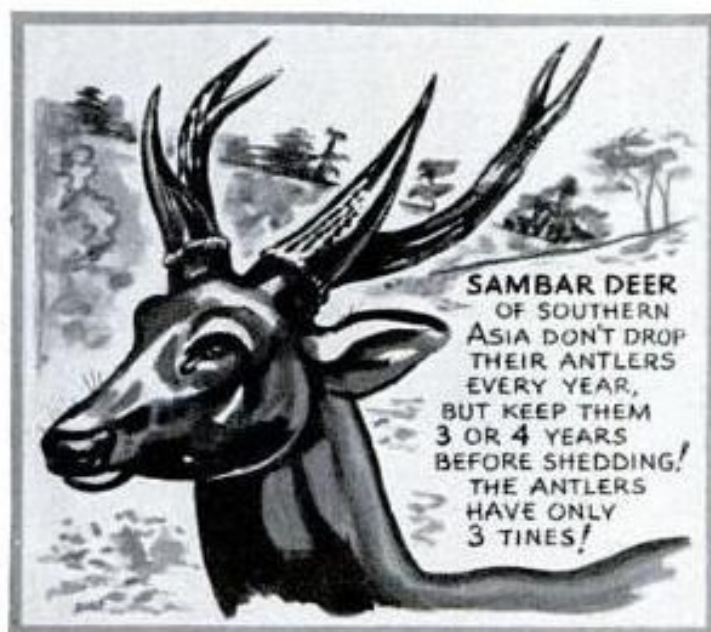


PERHAPS THE ONLY MAMMAL VENTRILOQUIST IS THE **PICA**, A ROCKY MOUNTAIN RODENT! EACH TIME THE LITTLE ANIMAL SQUEAKS, ITS SHRILL VOICE SEEMS TO COME FROM A DIFFERENT PLACE, TO THE CONFUSION OF ITS ARCH ENEMY, THE HUNTING EAGLE! ??

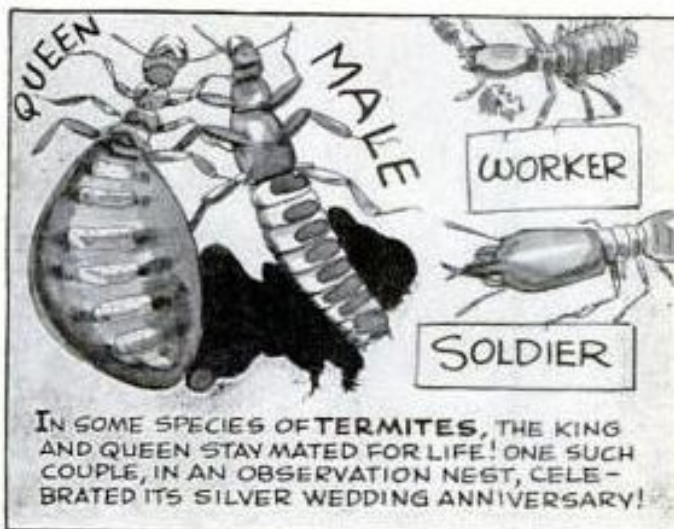
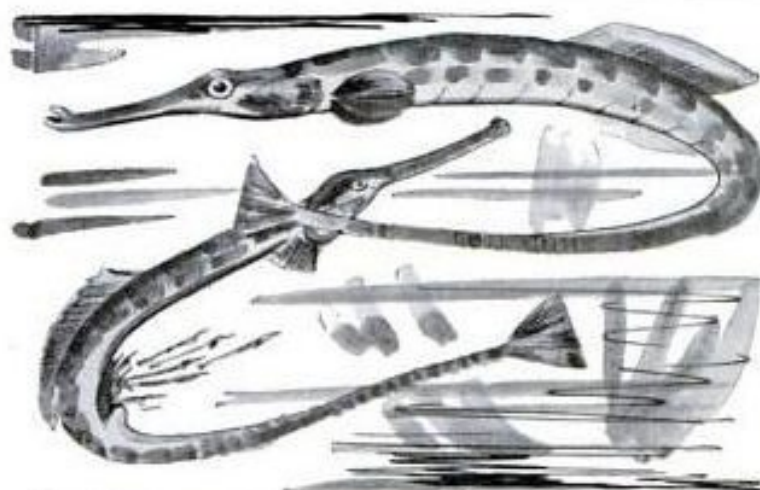
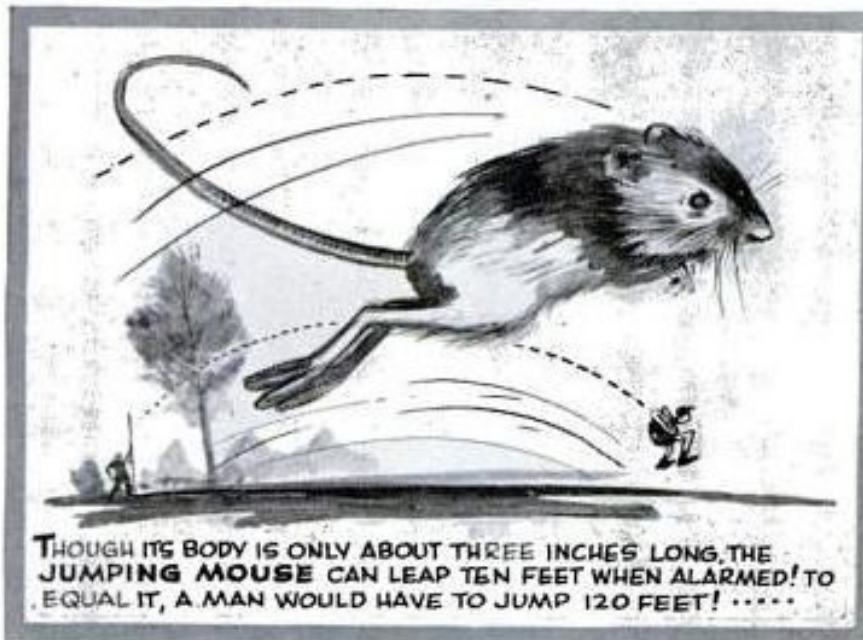


**DAMSEL FLIES** COMMONLY FLY TANDEM, THE MALE GRASPING THE THORAX OF THE FEMALE AND FLYING IN FRONT OF HER ON HER EGG-LAYING EXPEDITIONS! HE EVEN GOES UNDER WATER WITH HER TO PLACE EGGS ON SUBMERGED PLANTS!







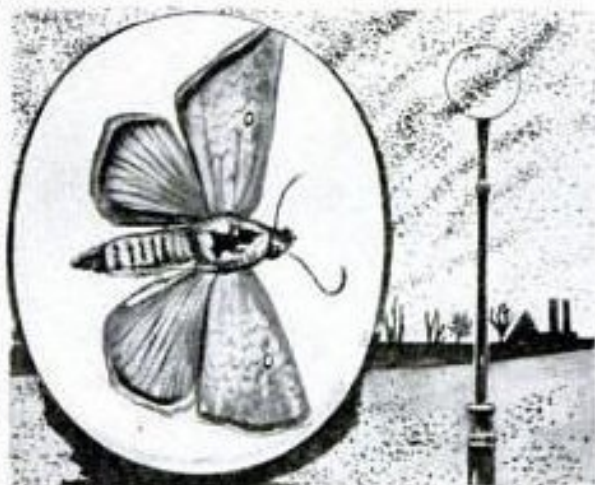






RANGY TEXAS LONGHORNS WERE ALL RIGHT IN THE OLD DAYS WHEN CATTLE WENT TO MARKET ON THE HOOF! BUT NOW THAT STEERS RIDE IN CATTLE CARS, THE BEEFY SHORTHORNS AND HEREFORDS HAVE CROWDED THEM OUT!

MIGRATING IN THE SPRING FROM THE TROPICS TO OUR COTTON STATES, THE **COTTON-WORM MOTH** DOES NOT RETURN SOUTH IN THE FALL! INSTEAD, HE PUSHES ON NORTH TO SWARM AROUND LAMPS IN NEW ENGLAND AND CANADA!



BOW-OO-  
OO-OO-  
OOO-  
OO-



**GREYHOUNDS** HUNT BY SIGHT ALONE, INSTEAD OF FOLLOWING THEIR NOSES LIKE OTHER HOUNDS! AND THEY RUN IN SILENCE, WHILE THEIR FLOP-EARED COUSINS HOWL, OR BAY, WHILE TRAILING!

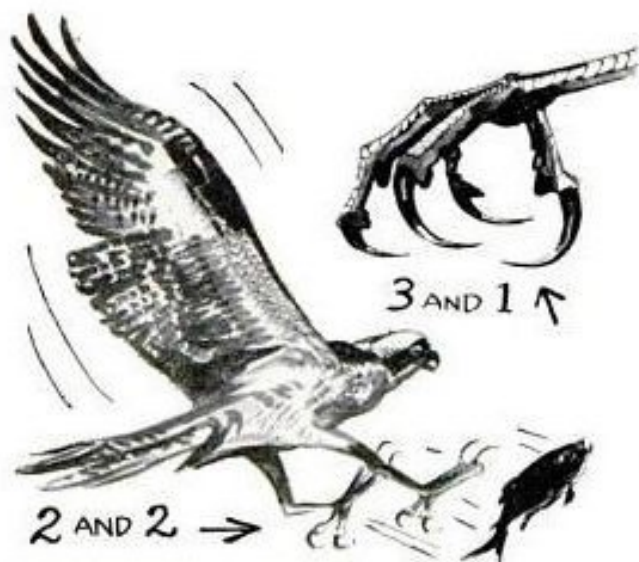


THE STRANGE PLANT **EUPHORBIA CANARIENSIS**, OF THE CANARY ISLANDS, THRIVES ONLY WHERE ITS ROOTS CAN TOUCH LAVA ROCKS! IT SECRETES A STINGING JUICE USED BY THE NATIVES TO STUPEFY FISH!

YOU'D THINK THAT ALL **FROGS** WOULD NEED TONGUES TO CATCH THEIR FOOD, BUT IN TROPICAL AFRICA LIVES A CLAWED FREAK THAT IS ABSOLUTELY TONGUELESS!







**THE OSPREY** IS THE ONLY KIND OF HAWK THAT CAN REVERSE ITS OUTER TOE TO ARRANGE ITS CLAWS IN PAIRS LIKE THE OWL'S! ALL OTHER HAWKS USE THE 3 AND 1 COMBINATION!



MOST BIRDS' EYES ARE SET IN THE SIDE OF THE HEAD, BUT THE OWL'S FACE FORWARD! THE BARN OWL'S ARE IN REFLECTORS, TO GATHER DIM LIGHT AS IT HUNTS FOR MICE! .....

ON THE OTHER HAND, THE HUNTED WOODCOCK, WHOSE BILL IS OFTEN BURIED IN THE MUD, HAS HIS EYES FAR BACK TOWARD THE TOP OF HIS HEAD, TO WATCH FOR ENEMIES!



NEAR COUDERSPORT, PA., IS A STRANGE ICE MINE! ON THE HOTTEST DAYS, THE FISSURES OF THIS CAVE ARE HUNG WITH ICICLES! WHEN COLD WEATHER COMES, THE ICE MELTS!



**MEET THE HAIRY FROG!** THE MALE OF THIS WEST AFRICAN SPECIES GROWS A FRINGE OF RED HAIRS ALONG HIS LEGS, LIKE A COWBOY'S CHAPS, TO MATCH THE WEEDS OF HIS NATIVE STREAMS!



UNLIKE THEIR PARENTS, YOUNG **TAPIRS** ARE VIVIDLY STRIPED! YOUNG OF MANY ANIMALS DIFFER IN COLORATION FROM ADULTS!



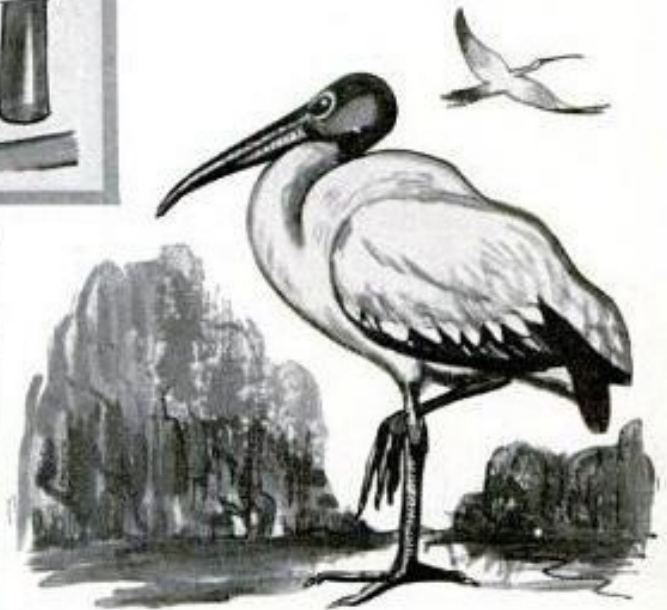
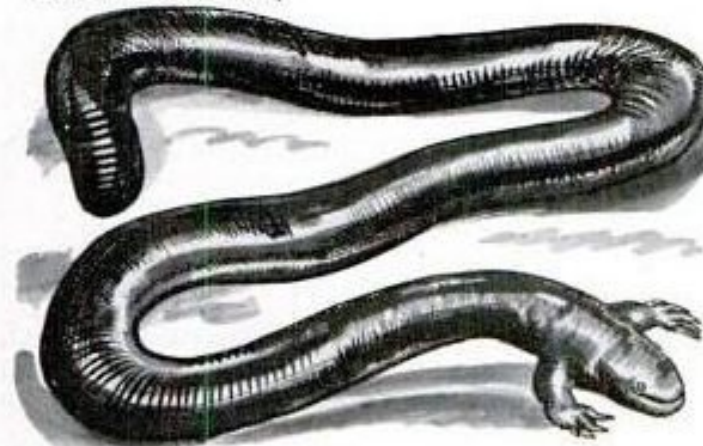


**DOGS ARE COLOR-BLIND!**  
SINCE THEY CANNOT DISTINGUISH  
RED AND GREEN TRAFFIC LIGHTS,  
SEEING-EYE DOGS ARE  
TRAINED TO RELY ON SCENT,  
HEARING, AND OBSERVATION  
IN GUIDING THEIR BLIND  
MASTERS ACROSS STREETS!

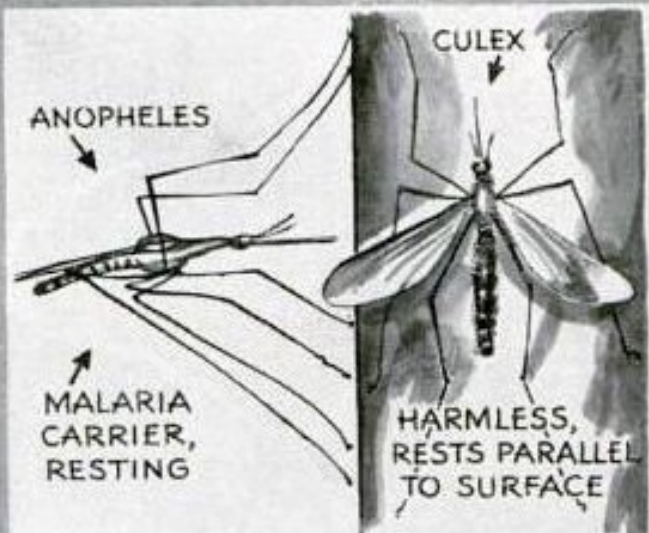
**THE AMAZING PORPOISE** LOOKS LIKE  
A FAT, CLUMSY PIG, BUT IT CAN DO  
FIFTY MILES AN HOUR AND TURN  
RIGHT-ANGLE CORNERS AT TOP SPEED!



**HERE IS A TWO-FOOTED WORM LIZARD!**  
IT IS NINE INCHES LONG AND EACH OF ITS  
TWO FEET HAS FOUR WELL-DEVELOPED  
CLAWS AND A FIFTH TOE WHICH IS  
CLAWLESS! FOUND IN SOUTHERN AND LOWER  
CALIFORNIA, IT SPENDS ALL ITS TIME  
UNDERGROUND!

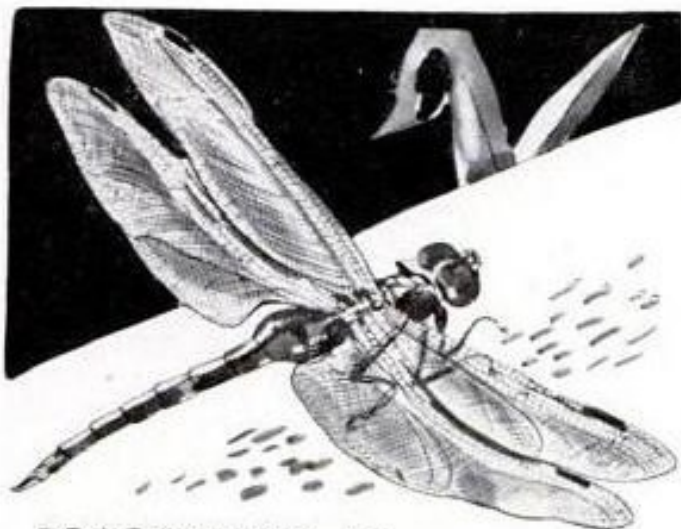


**THE WOOD IBIS** IS THE ONLY  
NEAR RELATIVE OF THE STORK  
THAT IS NATIVE TO AMERICA!



**HERE'S HOW TO TELL THE MALARIA-CARRYING ANOPHELES MOSQUITO FROM THE RELATIVELY HARMLESS CULEX:** WHEN RESTING, THE ANOPHELES STICKS ITS BODY OUT AT RIGHT ANGLES TO THE SURFACE, WHILE THE CULEX HOLDS ITS BODY PARALLEL!



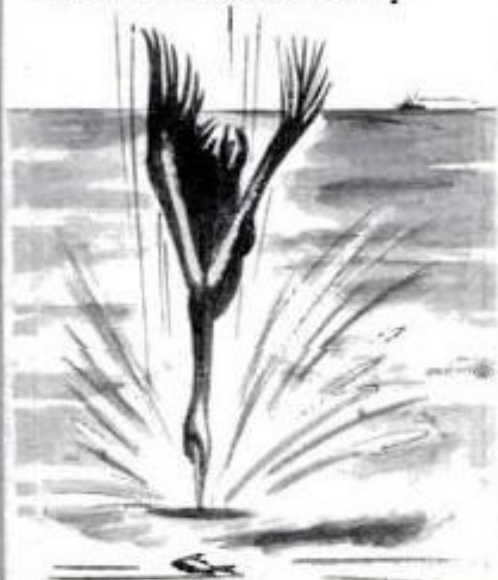


**DRAGONFLIES** ARE MARVELOUSLY EFFICIENT FLYING MACHINES, BUT IN SPITE OF THEIR SIX LEGS THEY CANNOT WALK!

THAT MONSTROUS FALSE EYE IN THE RUMP OF THE **SPHINX MOTH CATERPILLAR** IS ENOUGH TO SCARE ANYBODY WHO COMES UPON THE BIG LARVA ON THE GRAPE ARBOR! TO MAKE MATTERS WORSE, THE CATERPILLAR SQUIRMS VIOLENTLY FROM SIDE TO SIDE TO THE ACCOMPANIMENT OF A FRIGHTFUL SQUEAK!

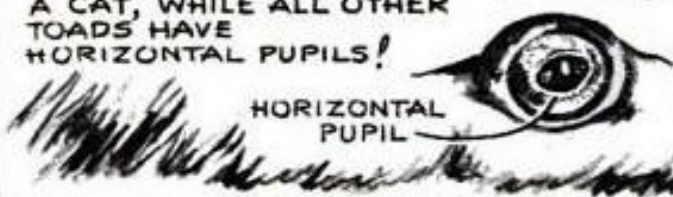


THE **CORMORANT** FOUND IN PERU DIFFERS FROM ALL OTHER CORMORANTS IN ITS FEEDING HABITS. INSTEAD OF DIVING FOR FISH FROM THE SURFACE, IT HUNTS ITS PREY FROM THE AIR AND THEN DIVES AFTER IT!



WHEN THE AUSTRALIAN **WOMBAT** ENCOUNTERS A RIVER IN ITS TRAVELS, IT WALKS RIGHT INTO THE WATER AND ACROSS ON THE BOTTOM OF THE STREAM!

ENTIRELY NOCTURNAL IN ITS HABITS, THE **SPADEFOOT TOAD** LEAVES ITS BURROW ONLY AT NIGHT! ITS EYES HAVE VERTICAL PUPILS LIKE THOSE OF A CAT, WHILE ALL OTHER TOADS HAVE HORIZONTAL PUPILS!



HORIZONTAL PUPIL

VERTICAL PUPIL

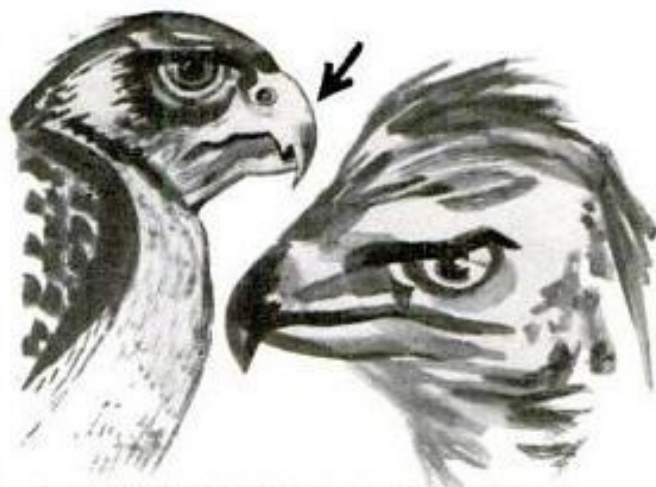


**FLYING DRAGON LIZARDS** OF MALAYSIA HAVE MOVABLE RIBS COVERED BY MEMBRANE, WHICH THEY CAN SPREAD TO GLIDE THROUGH THE AIR LIKE FLYING SQUIRRELS!



**NO. 1 GANGSTER OF THE ANIMAL WORLD IS THE WOLVERINE!** BESIDES ROBBING TRAPS AND HIDING LOOT, IT HAS BEEN KNOWN TO CARRY OFF A WHOLE ROOMFUL OF FURNITURE!

THESE SPURS ON THE UNDER SIDE OF THE **INDIAN PYTHON** ARE THE EXTERNAL PORTION OF RUDIMENTARY LEGS POSSESSED BY ALL MEMBERS OF THE FAMILY BOIDAE!

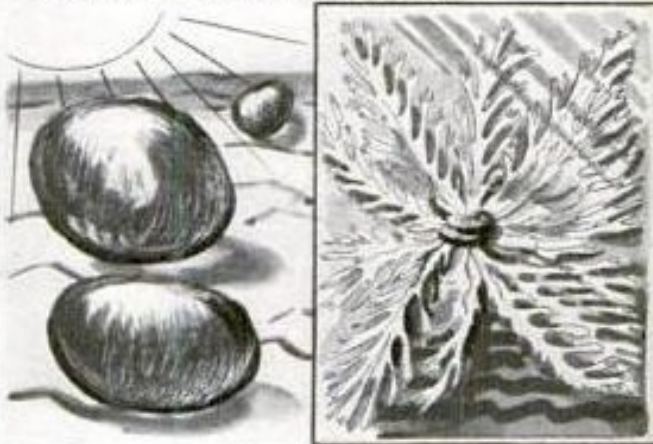


**TRUE FALCONS** ARE KNOWN FROM OTHER HAWKS BY A NOTCH IN THE UPPER MANDIBLE OF THE BEAK!



**HONEYBEES** SEEM TO KNOW INSTINCTIVELY WHETHER HUMANS ARE AFRAID OF THEM! SOME BEEKEEPERS, BY FEARLESS HANDLING, CAN DRAPE THEIR SWARMS HARMLESSLY ABOUT THEIR HEADS!

**RESURRECTION PLANTS** FOUND ON THE DESERTS OF MEXICO AND ASIA LOOK LIKE DRY BALLS OF WORSTED UNTIL A RAINSTORM MAKES THEM UNFOLD THEIR FEATHERY LEAVES AND CLOTHE THE BARREN GROUND WITH GREEN!





**MOST MOTHS FLY BY NIGHT, BUTTERFLIES BY DAY! HERE IS AN UPSET! THE URANIA MOTH OF SOUTH AMERICA FLIES BY DAY LIKE A TRUE BUTTERFLY!**



**NATURALISTS ARE STILL BATTLING OVER WHETHER THE BIRD-EATING SPIDERS OF CENTRAL AMERICA ACTUALLY EAT BIRDS! IF FEATHERS, FOUND AROUND THE SPIDERS' SILKEN LAIRS, MEAN ANYTHING, THE AYES SHOULD HAVE IT!**



**WHEN AN ELEPHANT'S WEIGHT IS PLACED ON ITS FEET, THE FEET EXPAND! AND WHEN THE WEIGHT IS LIFTED, THE FEET CONTRACT! THE SPREADING KEEPS THE PACHYDERM FROM SINKING TOO DEEP IN MIRE, AND THE CONTRACTING LETS THE FEET BE DRAWN OUT EASILY—**



**THE AFRICAN TILAPIA IS ONE OF THOSE STRANGE FISH THAT CARRY EGGS IN THEIR MOUTHS UNTIL THEY HATCH! FOR SOME TIME THE FRY SWIM BACK INTO THE PARENT'S MOUTH WHEN DANGER THREATENS!**

**THE SAUSAGE TREE (KIGELIA PINNATA) HAS BEEN BROUGHT TO THE WARMER PARTS OF THIS COUNTRY FROM ITS NATIVE AFRICA! IT SPORTS LONG SAUSAGE-SHAPE FRUIT HANGING FROM EQUALLY LONG FIBER CORDS! THE FRUIT IS FILLED WITH WOODY FIBER—NOT SAUSAGE MEAT!**







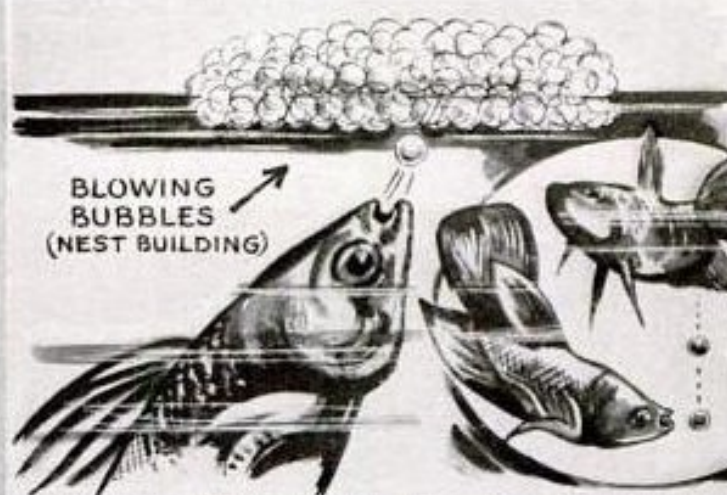
THE TRUE SEAL HAS NO EXTERNAL EARS, AND ITS TAIL IS DIRECTED STRAIGHT BACK AS A RUDDER! BUT EARED SEALS, INCLUDING THE SEA LION, HAVE EARS AND HIND FLIPPERS THAT TURN FORWARD, WHILE THE WALRUS HAS NO EXTERNAL EARS BUT HAS FLIPPERS LIKE THE SEA LION'S!

EVERY BEE COLONY HAS A DISTINCTIVE ODOR, SO THAT SENTINELS ON GUARD CAN RECOGNIZE INVADERS OR ALIEN FIFTH COLUMNISTS BY THEIR SMELL AND MAKE SHORT WORK OF THEM WITH THEIR STINGS!



EVERY ONCE IN A WHILE A MOTHER TRAP-DOOR SPIDER WILL SNAP UP ONE OF HER YOUNG AND CRUSH IT BETWEEN HER JAWS, SO THAT THE OTHER MEMBERS OF HER LARGE FAMILY MAY PARTAKE OF THE JUICES OF THEIR LITTLE BROTHER OR SISTER!

OUR PINE SNAKE SWALLOWS EGGS WHOLE! THAT IS, THEY GO DOWN ABOUT EIGHT INCHES BEFORE MUSCULAR PRESSURE BREAKS THE SHELL, THEN EGG AND SHELL FRAGMENTS GO ON DOWN THE HATCH TOGETHER!



RETRIEVING EGGS



MALE FIGHTING FISH OF THAILAND (SIAM) MAKE NESTS OF BUBBLES ON THE SURFACE OF THE WATER TO HOLD THE FEMALE'S EGGS! AS EGGS ARE DROPPED IN THE WATER, BOTH THE MALE AND THE FEMALE RETRIEVE THEM AND BLOW THEM INTO THE NEST! THEN THE MALE FISH DRIVES THE FEMALE AWAY AND STANDS GUARD UNTIL THE EGGS ARE HATCHED!